



Filtering efficiency

ORIGINAL CIBER



Benefit from the most efficient methods of airflow collection and maintenance.
IF YOU COMPARE, YOU BUY THE ORIGINAL!

CIBER EQUIPAMENTOS RODOVIÁRIOS Ltda.

Rua Senhor do Bom Fim, 177 · 91140-380 Porto Alegre/RS · Brazil

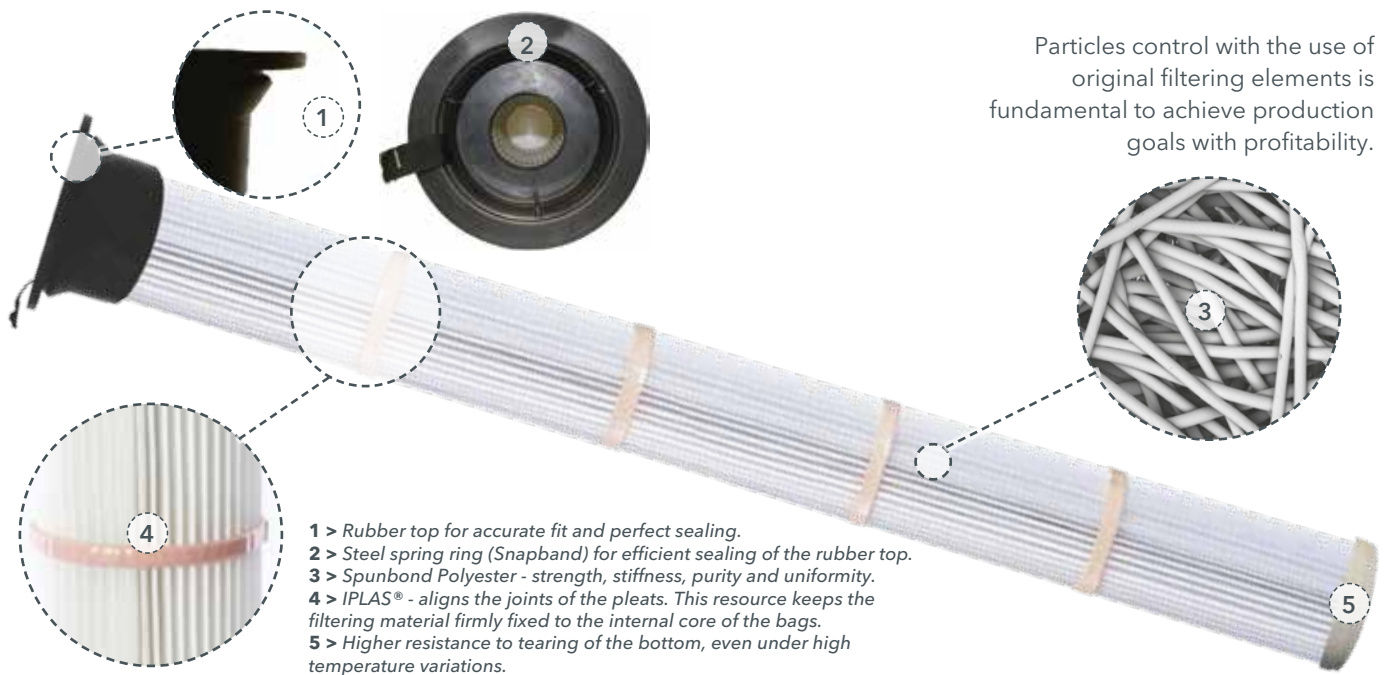
T: +55 51 / 33 64 92 00 · F: +55 51 / 33 64 92 28

ciber@ciber.com.br

 www.ciber.com.br

 [ciberoficial](https://www.youtube.com/c/ciberoficial)

FILTERING EFFICIENCY



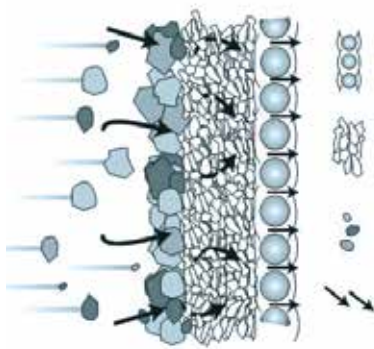
Particles control with the use of original filtering elements is fundamental to achieve production goals with profitability.

- 1 > Rubber top for accurate fit and perfect sealing.
- 2 > Steel spring ring (Snapband) for efficient sealing of the rubber top.
- 3 > Spunbond Polyester - strength, stiffness, purity and uniformity.
- 4 > IPLAS® - aligns the joints of the pleats. This resource keeps the filtering material firmly fixed to the internal core of the bags.
- 5 > Higher resistance to tearing of the bottom, even under high temperature variations.

NEUTRALITE®

Neutralite® works as a precoat and its function is to protect the pleated bag.

- > It absorbs up to 250% of its weight in oil and hydrocarbons to prevent damage to the filtering elements.
- > It absorbs up to 300% of its weight in moisture.



Reference: 7023213
Neutralite®

VISOLITE®

Visolite® is a powder that helps in the inspection of holes and leaks.

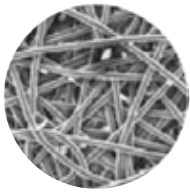
When in contact with black light the dust leakage points become visible and easily detectable, thanks to the fluorescent power.



Reference: 7023776
Visolite®



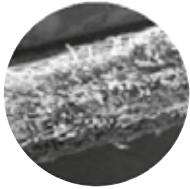
SPUNBOND X CONVENTIONAL POLYESTER



Front view of the **Spunbond polyester enlarged 100x**



Front view of the **conventional polyester filter enlarged 100x**

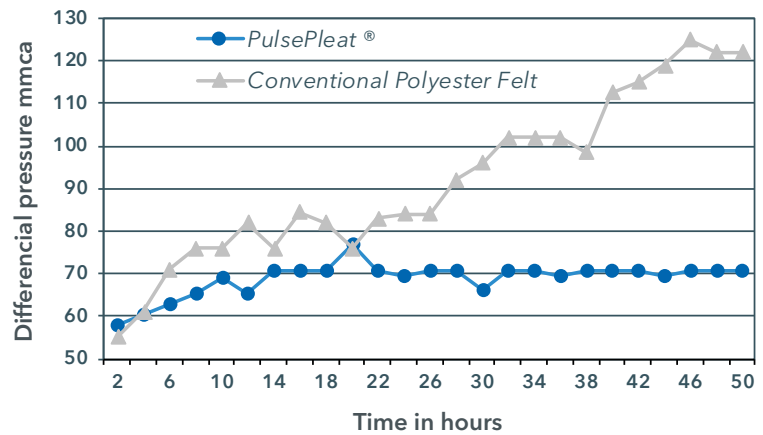


Front view of the **Spunbond polyester enlarged 50x**



Front view of the **conventional polyester filter enlarged 50x**

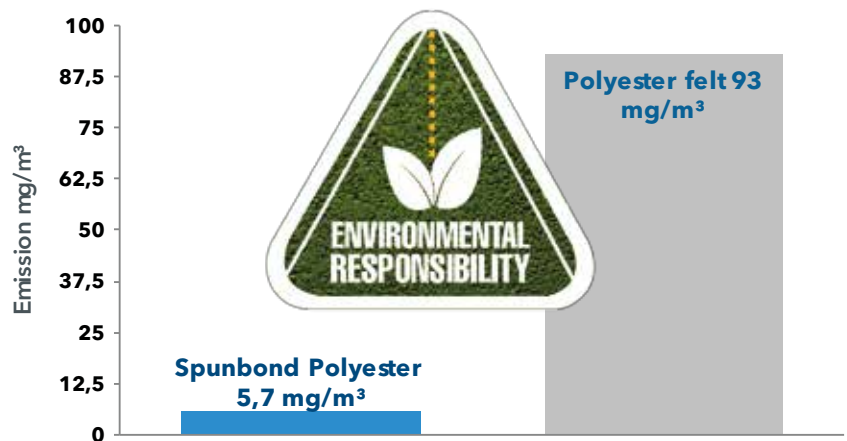
The **Spunbond** material is pleated and molded in a filtering element that increases the filtering surface by **2 to 3 times when compared** to smooth filters, **significantly reducing** the differential pressures generated by the restriction.



The technology applied to the filtering material **ensures** a structure of extremely narrow pores which **resist** to the penetration of rigid particles.

The **Spunbond** filtering material applied in the filtering elements of **PulsePleat®** has a higher yield without restrictions.

Outflow emissions



EASY SPIN



Reference: 7116987
Easy Spin

To complement assembly facility and practicality achieved with the **PulsePleat Easy Service** generation, we have launch the **tool Easy Spin**.

The tool helps assembling and disassembling the filtering element.



1

1 > IPLAS®
2 and 3 > Competition



2



3

DISADVANTAGES OF NON ORIGINAL BAGS

- > The use of 13 pleat joints, whereas in the original only 6 are used. The higher the number of joints, the smaller the filtering area;
- > Non-original bags use a metal top, therefore it is not possible to disassemble them to wash without affecting the structure of the top, which generates leaks when they are assembled in the machine again;
- > Increase of machine downtime, since the cost-benefit ratio is lower;
- > After 300 hours of operation, the joints of the pleats break;
- > Oxidation points in the internal metal structure due to welding quality.

EVOLUTION OF CIBER ORIGINAL BAGS

2003 > UTA > Polyurethane varies in form, once the temperature in the bag filter reaches a safe level to avoid condensation.

2005 > METAL > Sealing with a spring ring coated with polyester, sensitive to small movements that affect the sealing resulting in leaks.

2011 > EASY SERVICE > With internal wedges the tip facilitates the assembly of the steel spring ring, which presses it against the support plate ensuring perfect sealing.

